

\$325,000 - 16 Savanna Passage Ne, Calgary

MLS® #A2200941

\$325,000

2 Bedroom, 1.00 Bathroom, 564 sqft
Residential on 0.00 Acres

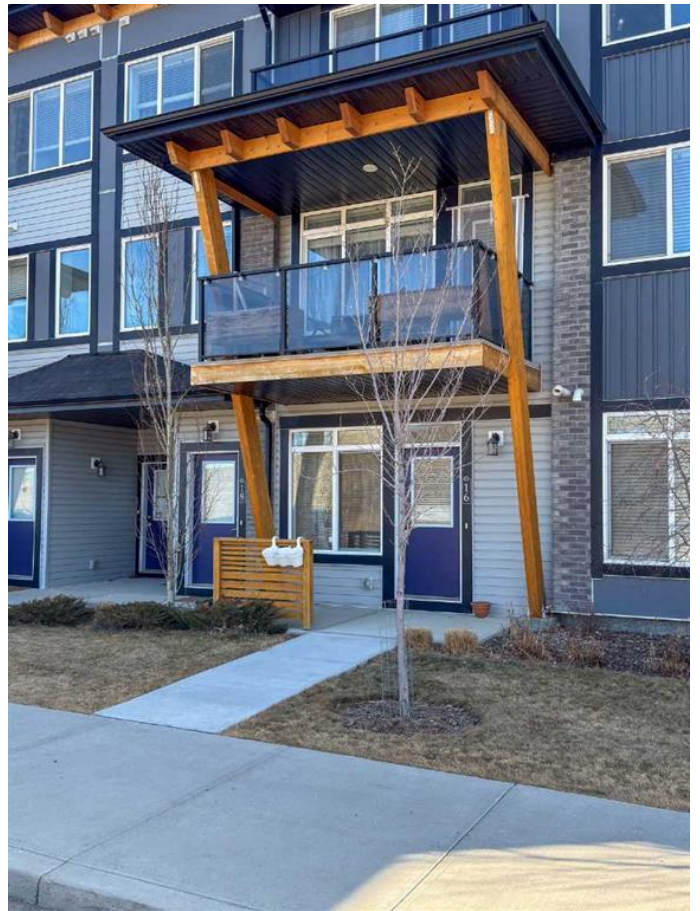
Saddle Ridge, Calgary, Alberta

Welcome to this beautiful single-level townhome in Savanna. Wonderful opportunity for a first-time buyer or an investor looking for a perfect opportunity. This convenient two-bedroom and one-bathroom unit is ideally situated near all the essential amenities, making it a perfect choice for everyone. The well-maintained unit includes a living room designed to meet maximum space and comfort for everyday living, a kitchen with stainless steel appliances, a quartz countertop, and a peninsula for extra seating. The two good-sized bedrooms provide ample space for relaxation. The bathroom is well-appointed with contemporary fixtures and finishes. For investors, this property presents an exceptional opportunity for short-term rentals, such as Airbnb, opening the door to a potentially lucrative investment. Being in Savanna in Saddle Ridge, the location is a prime attraction for this unit. The community is well-connected, with easy access to major roadways and public transportation, walking distance to schools, both public and Catholic, shopping centers, and restaurants. Don't miss out on becoming a proud owner of this unit!

Built in 2021

Essential Information

MLS® #	A2200941
Price	\$325,000



Bedrooms	2
Bathrooms	1.00
Full Baths	1
Square Footage	564
Acres	0.00
Year Built	2021
Type	Residential
Sub-Type	Row/Townhouse
Style	Townhouse
Status	Active

Community Information

Address	16 Savanna Passage Ne
Subdivision	Saddle Ridge
City	Calgary
County	Calgary
Province	Alberta
Postal Code	T3J 0Y2

Amenities

Amenities	Park, Playground
Parking Spaces	1
Parking	Single Garage Attached
# of Garages	1

Interior

Interior Features	Kitchen Island, No Animal Home, No Smoking Home, Open Floorplan, Pantry, Storage
Appliances	Dishwasher, Dryer, Electric Stove, Microwave Hood Fan, Refrigerator, Washer
Heating	Forced Air
Cooling	None
Basement	None

Exterior

Exterior Features	Courtyard, Private Entrance
Lot Description	Rectangular Lot
Roof	Asphalt Shingle
Construction	Vinyl Siding, Wood Frame

Foundation Poured Concrete

Additional Information

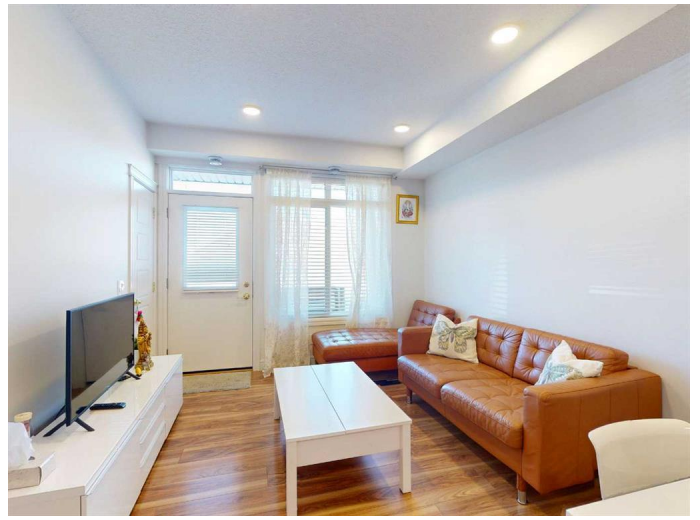
Date Listed March 10th, 2025

Days on Market 26

Zoning M-1

Listing Details

Listing Office MaxWell Central



Data is supplied by Pillar 9â,,ç MLSÂ® System. Pillar 9â,,ç is the owner of the copyright in its MLSÂ® System. Data is deemed reliable but is not guaranteed accurate by Pillar 9â,,ç. The trademarks MLSÂ®, Multiple Listing ServiceÂ® and the associated logos are owned by The Canadian Real Estate Association (CREA) and identify the quality of services provided by real estate professionals who are members of CREA. Used under license.