

\$628,000 - 16 Glensummit Close, Cochrane

MLS® #A2210863

\$628,000

3 Bedroom, 4.00 Bathroom, 1,807 sqft
Residential on 0.10 Acres

GlenEagles, Cochrane, Alberta

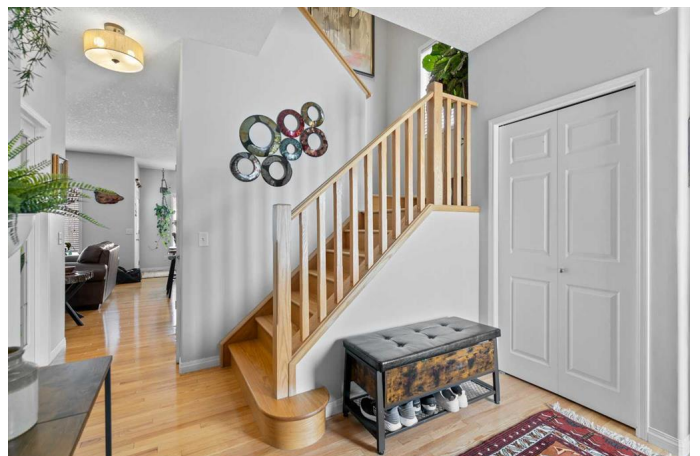
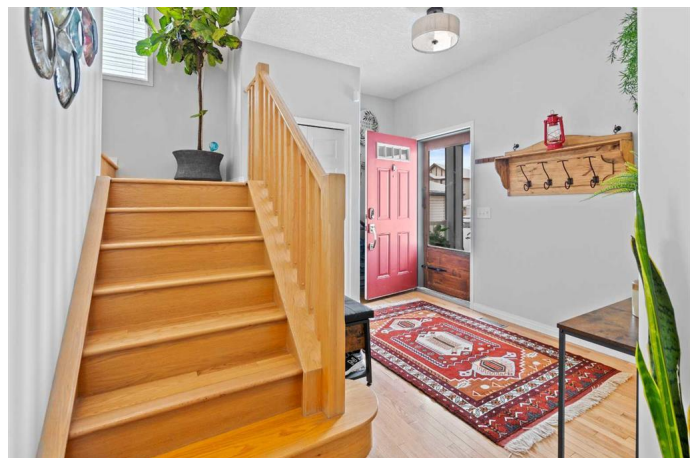
Welcome to 16 Glen Summit Close, nestled in the sought-after community of The Summit of Glen Eagles.

This beautifully designed home offers over 2,500 sq. ft. of developed living space, an ideal layout, and stunning mountain views. The main floor features a dedicated home office, perfect for remote work, and an open-concept kitchen that seamlessly flows into the spacious living and dining areas—great for both everyday living and entertaining.

Upstairs, you'll find three generously sized bedrooms, including a serene primary suite complete with a large walk-in closet and a private 3-piece ensuite. A 4-piece main bathroom and convenient upstairs laundry round out the upper level.

Downstairs, the fully developed basement is a cozy retreat—perfect for movie nights with the built-in projector or hosting friends for game night.

Step outside into your backyard oasis with its newly updated composite deck, where you can unwind or entertain while soaking in the peaceful surroundings and mountain air. With plenty of space to host guests and enjoy the outdoors, this home offers the best of both relaxation and lifestyle. An attached garage adds year-round convenience, while nearby



walking paths and breathtaking views make every day feel like a getaway.

All of this, just a short drive to Calgary, Kananaskis, or Banffâ€”giving you the perfect balance of nature, small town living and big city access.

Donâ€™t miss your chance to own in one of Cochraneâ€™s most desirable neighbourhoods. Book your showing today!

Built in 2005

Essential Information

| | |
|----------------|-------------|
| MLS® # | A2210863 |
| Price | \$628,000 |
| Bedrooms | 3 |
| Bathrooms | 4.00 |
| Full Baths | 2 |
| Half Baths | 2 |
| Square Footage | 1,807 |
| Acres | 0.10 |
| Year Built | 2005 |
| Type | Residential |
| Sub-Type | Detached |
| Style | 2 Storey |
| Status | Active |

Community Information

| | |
|-------------|---------------------|
| Address | 16 Glensummit Close |
| Subdivision | GlenEagles |
| City | Cochrane |
| County | Rocky View County |
| Province | Alberta |
| Postal Code | T4C2J9 |

Amenities

| | |
|----------------|-------------------------------|
| Amenities | Community Gardens, Playground |
| Parking Spaces | 2 |

| | |
|--------------|------------------------|
| Parking | Double Garage Attached |
| # of Garages | 2 |

Interior

| | |
|-------------------|---|
| Interior Features | Kitchen Island, Laminate Counters, Open Floorplan |
| Appliances | Dishwasher, Dryer, Garage Control(s), Microwave, Refrigerator, Washer, Window Coverings |
| Heating | Forced Air, Natural Gas |
| Cooling | None |
| Has Basement | Yes |
| Basement | Finished, Full |

Exterior

| | |
|-------------------|--|
| Exterior Features | Private Yard |
| Lot Description | Back Yard, Landscaped, Lawn, Street Lighting |
| Roof | Concrete |
| Construction | Vinyl Siding, Wood Frame |
| Foundation | Poured Concrete |

Additional Information

| | |
|----------------|------------------|
| Date Listed | April 10th, 2025 |
| Days on Market | 8 |
| Zoning | R-MX |
| HOA Fees | 125 |
| HOA Fees Freq. | ANN |

Listing Details

| | |
|----------------|-------------------------|
| Listing Office | Grassroots Realty Group |
|----------------|-------------------------|

Data is supplied by Pillar 9â„¢ MLSÂ® System. Pillar 9â„¢ is the owner of the copyright in its MLSÂ® System. Data is deemed reliable but is not guaranteed accurate by Pillar 9â„¢. The trademarks MLSÂ®, Multiple Listing ServiceÂ® and the associated logos are owned by The Canadian Real Estate Association (CREA) and identify the quality of services provided by real estate professionals who are members of CREA. Used under license.